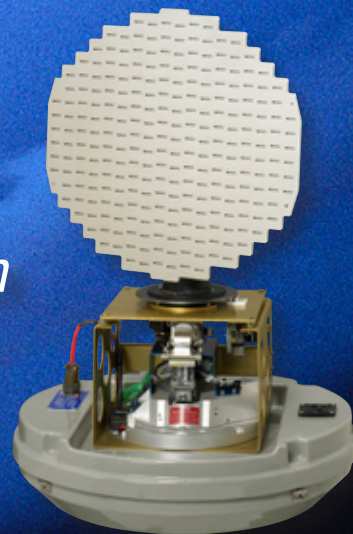




E600 Series II

Portable, Tactical Weather Radar System



E600 Tactical Weather Radar System

Used as a tactical unit by the U.S. Military, the E600 Series II is the most portable weather radar system on the market today. This compact unit has been designed to be easy to transport and can be quickly assembled and field operational in just 30 minutes.



Real Time Weather Radar Surveillance... anywhere in the world.

The E600 is the ideal choice for a wide variety of military and civilian applications. Weather sensitive operations rely on the E600 to deliver accurate, real-time information including:

- Location of precipitation
- Intensity of precipitation
- Direction of cell movement
- Speed of cell movement

The E600 has been designed for maximum portability but also has been engineered to withstand the rigors of front line duty. In fact, the E600 is in service in some of the most difficult military theaters around the world today.

The E600's exclusive combination of power and portability make this system the number one choice in tactical weather radar systems.

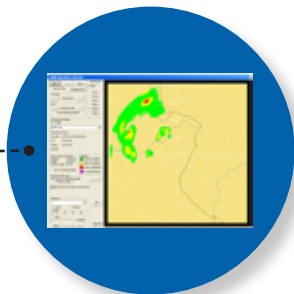
The E600 deployed on a pneumatic 50' mast.

Compact, Lightweight Design

The E600 radome is constructed of strong but lightweight fiberglass with an a unique UV inhibiting outer layer. The entire radome and antenna assembly weighs in at just 50 lbs. The power supply/control unit is 12"x 11"x 6" in size and fits easily on a table top. Metal parts and fasteners are made of stainless steel, lightweight anodized aluminum or stainless steel for added durability. Cables and wiring harnesses are fitted with quick release mil-spec aluminum connectors. Custom made E600 carrying cases are waterproof and are molded of virtually indestructible plastic. Cases are foam lined and include extra lift handles and wheels for easy movement in shipping and in the field. It all adds up to the only true portable weather radar system available today.



Distribute Images Via FTP
to Remote Locations



USB Interface



Main Cable and
Extension if Required

115/220v Power Source

Radome/Antenna
Installed on
Transportable Mast
or Fixed Tower

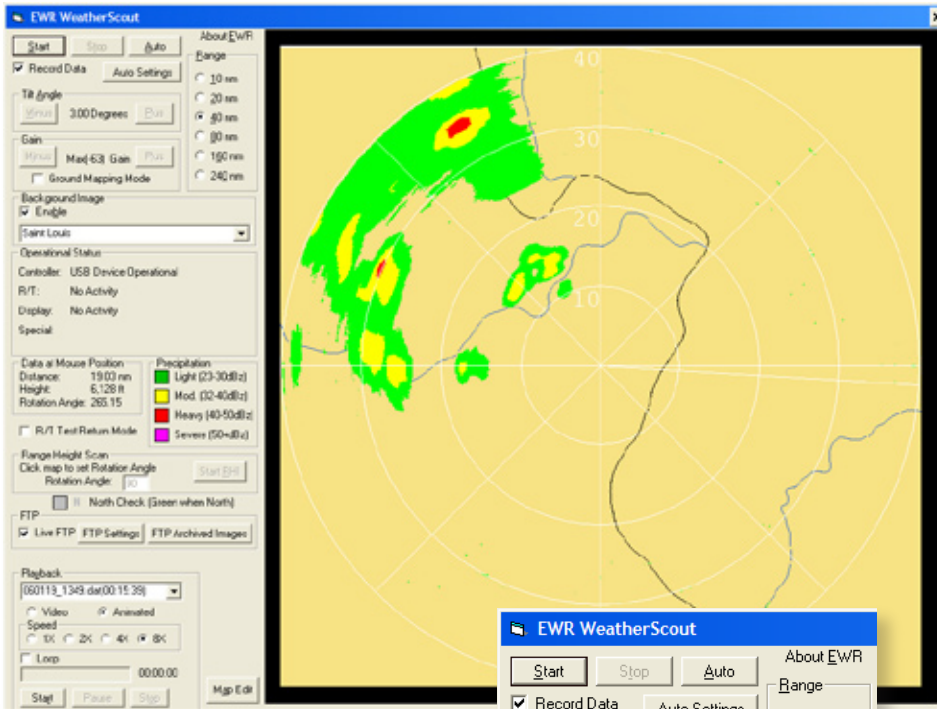
Typical E600 System Field Installation

WeatherScout™

Radar Control and Display Software

User Friendly Operation

The E600 system includes a laptop computer running the familiar Windows XP Professional operating system and EWR's proprietary WeatherScout™ software as standard features. All radar functions are controlled via the easy to use and intuitively designed control panels that enable the user to select ranges (10,20,40,80,160, and 240 nautical miles), tilt levels in .25° increments (0-15°) and to observe vertical cross sections of storm cells (RHI). WeatherScout's unique, GPS based mapping feature creates map sets on the fly, anywhere in the world. Record and playback options allow the operator to record weather events even when the system is unattended. These sessions can be recorded and played back or looped at a later time, or transferred via ftp to a remote location. These features and many more make the E600 the most powerful, cost effective and versatile radar solution on the market today.



Easy to use Windows interface

Automode allows the user to configure unit to scan and record data while unattended

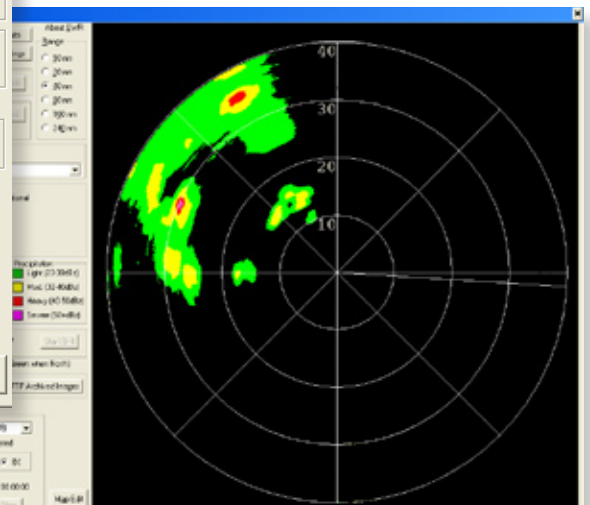
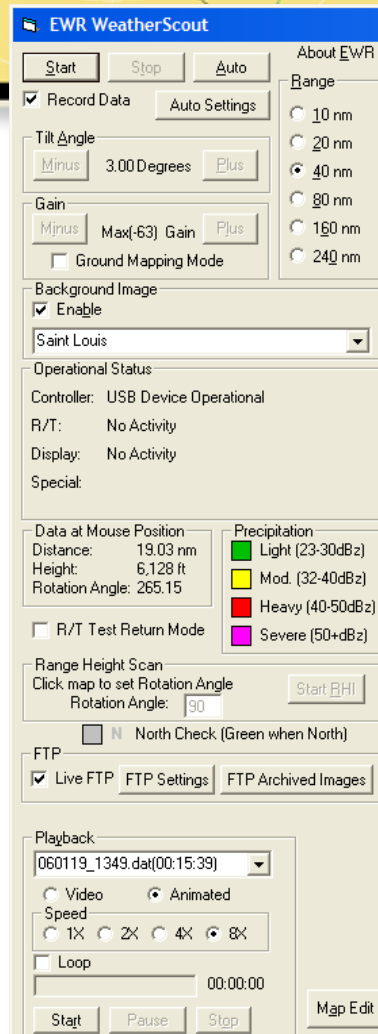
Dynamic range and height indication simply by pointing the mouse at the storm cell

RHI vertical scan feature allows the user to examine cell height at the click of the mouse

Complete record, playback and looping features

Saved images can be transferred via FTP to remote locations

EWR exclusive map generation feature allows the user to create background map sets by GPS location



E600 Standard Features

- X band R/T operating at 9375 +/- 25 MHz
- 18" flat plate antenna system with 360° rotation and 0-15° tilt capabilities
- High strength radome assembly with fiberglass lining and UV resistant finish, integrated wiring harnesses, Ventilation system, stainless hardware and beacon.
- Pentium IV (min.) laptop computer - 32 bit high resolution display and Windows XP Professional operating system.
- EWR Weather Scout™ software -
Complete radar control and display features including range display (10,20,40,80,160, and 240 nautical miles), tilt (0-15°), Vertical scanning capability for cell height study (RHI) Proprietary "one click" GPS location based map creation.
- Desktop Control and power supply unit - includes system power supplies and USB to laptop interface.
- 125' main cable and two 100' extension cables

Optional Components and Features

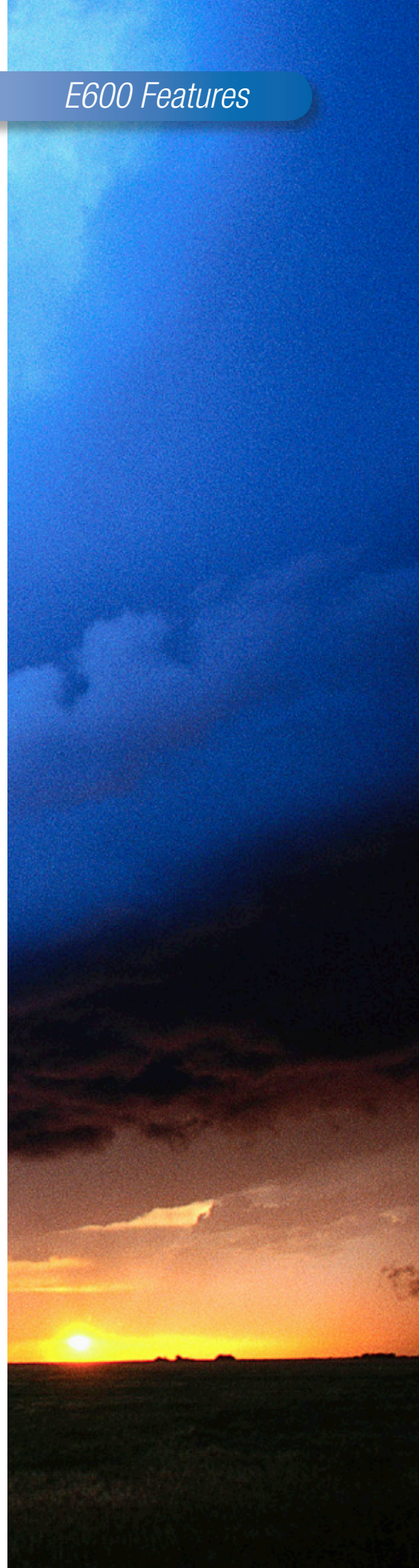
- Lightning dispersion system
- Lightning detection sensor system
- GPS handheld sensor
- Wind speed and direction
- Pneumatic or mechanical type 50' mast system
- Custom, heavy duty transport cases
- 30" flat plate antenna (contact EWR for complete information)



Radome with lightning dispersion system



Custom transport cases



E600 SPECIFICATIONS

Applications	Portable, Field Installations or Fixed Base Installation
Mounting	Optional Pneumatic or Mechanical Masts, Vehicle or Rooftop Mounting Systems contact EWR for more information
Range	Capable Up to 240 NM (444km)
Antenna	Phased Array Flat Plate, Lightweight Aluminum
Size	18" Diameter
Beam Width	5.5 Degrees
Gain	31 dB
Side Lobes (max)	-25 dB
Tilt	0-20 Degrees
Azimuth	360 Degree Rotation at 12 rpm
Radome	22" Diameter, 38" Height
Construction	.125+/- .0625 Fiberglass, White UV Resistant ABS Shell
Safety Beacon	Included
Grounding Protection	Included
Lightning Dispersion System	Optional
Receiver/Transmitter	X Band: 9375 +/- 25 MHz
Effective Radiated Power	2.5 kW to 4.0 kW 3.3 Kw Nominal
Effective Receiver Sensitivity	-110 dBm typical
Pulse Frequency	106.5 Hz +/- 5 Hz
Workstation	Pentium IV Laptop, Windows XP and EWR Weather Scout™ Software
Control Unit/Power Supply	115V 60Hz/230V 50 Hz Switchable, 28V Power Supply, USB Interface
Cables	125' Main Cable and 3-100' Extensions Included
Shipping/Storage Cases	Optional Heavy Duty Plastic with Foam Liners and Wheels

specifications subject to change without notice



*336 Leffingwell Avenue
Saint Louis, Missouri 63122
314.821.1022 fax 314.821.5622
www.ewradar.com*